

metal

Finitura decorativa brillante
con riflessi metallici
*Decorative finishing coat
with glimmering metal effect*

Designed and made in Italy
by

Colorificio Adriatico srl Industria Italiana Colori
Company with quality system certified
by DNV GL =ISO 9001=
Italia _ 61030 Lucrezia PU
+39.0721.897100
www.colorificioadriatico.it



www.decorativikebana.it

Adriatico

Possono esserci lievi differenze tra i colori di questo catalogo e quelli di produzione.
Controllare sempre il colore con la luce diurna indiretta o lampade opportunamente tarate.
There maybe slight differences between the sample color cards and the actual color
produced. Always check colors in indirect daylight or with lights suitably adjusted.

—
preziosi
riflessi


—
kebana
metal
attiva
la luce

Linea Kebana

metal

Finitura decorativa brillante con riflessi metallici
*Decorative finishing coat
with glimmering metal effect*

Adriatico



—
preziosi
riflessi
—

kebana
metal
attiva
la luce

Kebana Metal, finitura decorativa a base d'acqua con speciali pigmenti metallescenti. L'attenta ricerca tintometrica è riuscita ad imitare i colori ed i riflessi di pregiatissimi metalli, minerali e preziosi. Facilissima da applicare, è priva di solventi e di metalli pesanti, nel pieno rispetto dell'uomo e dell'ambiente.

Kebana Metal, water-based paint formulated with special metallescent pigments, that together with specific research on colour tinting, has succeeded in imitating the colours and reflections of prestigious metals, minerals and precious stones. Very easy to apply, free from solvents and heavy metals, in full respect for human health and the environment.

Linea Kebana

metal

Finitura decorativa brillante con riflessi metallici
*Decorative finishing coat
with glimmering metal effect*

Adriatico

Applicare una mano di Kebana Metal-Fond a pennello in modo irregolare, così da evidenziare gli effetti cromatici di Kebana Metal. Una volta asciutto, applicare due mani di Kebana Metal con pennello eseguendo movimenti irregolari; attendere l'asciugatura del prodotto tra una mano e l'altra.

Resa: 12/15 m² litro per mano.

Essiccazione: al tatto 2/3 ore. In profondità 12/15 ore.

Apply one coat of Kebana Metal-Fond with a brush in an irregular manner, to highlight the chromatic effects of Kebana Metal. Once dried, apply two coats of Kebana Metal with a brush with irregular movements; apply the second coat once the first one has dried.

Coverage: 12-15 m²/L per coat.

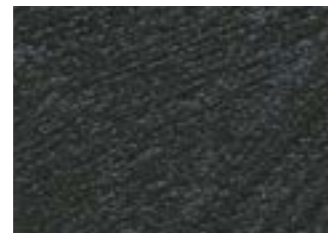
Drying time: touch: 2-3 hours, hard: 12-15 hours.

Onice



MLA 116

MLA 116.2



MLA 116.4

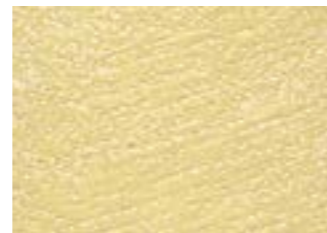


Ambra



MLA 120

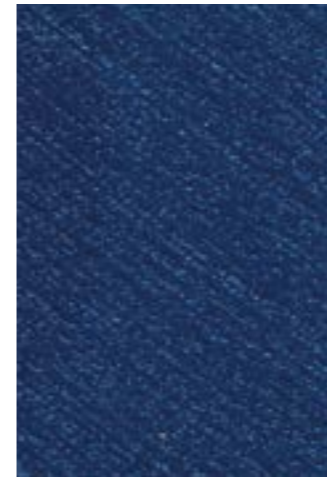
MLA 120.2



MLA 120.4



Zaffiro



MLA 113

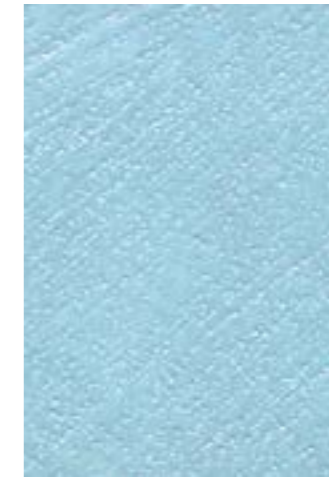
MLA 113.2



MLA 113.4



Turchese



MLA 114

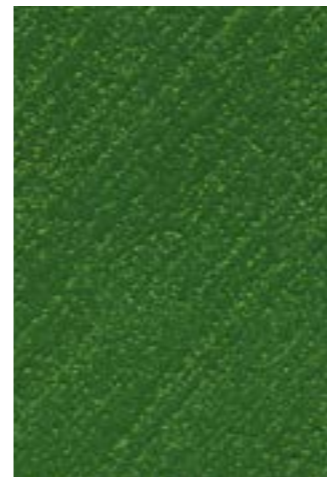
MLA 114.2



MLA 114.4



Granato



MLO 108

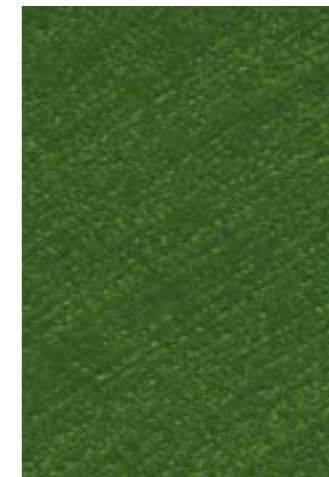
MLO 108.2



MLO 108.4

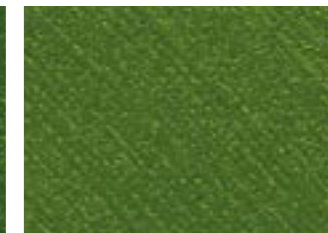


Smeraldo

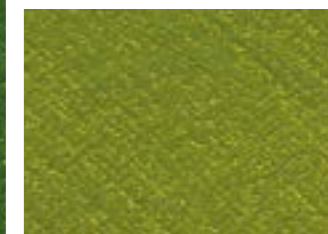


MLO 109

MLO 109.2



MLO 109.4



Kebana Metal Base Argento _ Silver Base



Verde rame



MLA 117

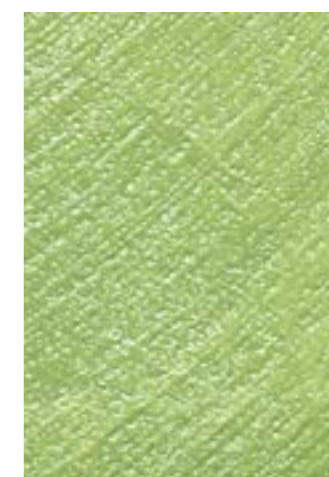
MLA 117.2



MLA 117.4



Giada



MLA 119

MLA 119.2

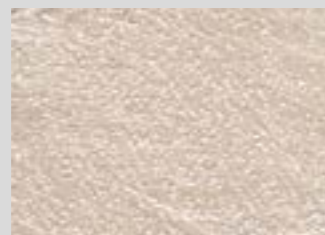


MLA 119.4



Ametista

MLA 118.2



MLA 118

MLA 118.4

Tormalina

MLA 112.2



MLA 112

MLA 112.4

Oro Rosa

MLO 105.2



MLO 105

MLO 105.4

metal

Finitura decorativa brillante con riflessi metallici
Decorative finishing coat with glimmering metal effect

Linea Kebana

Topazio

MLO 110.2

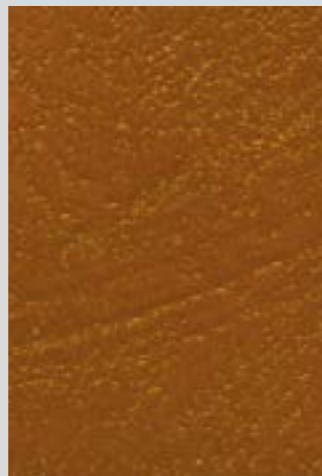


MLO 110

MLO 110.4

Bronzo

MLO 101.2

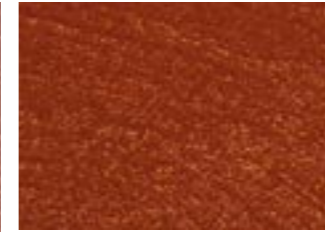


MLO 101

MLO 101.4

Rubino

MLO 106.2

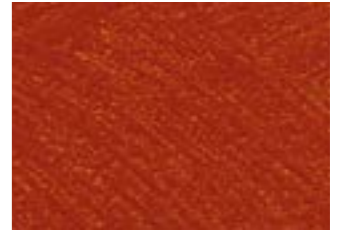


MLO 106

MLO 106.4

Corallo

MLO 107.2



MLO 107

MLO 107.4

Rame

MLO 103.2



MLO 103

MLO 103.4

Minio

MLO 102.2



MLO 102

MLO 102.4

Kebana Metal Base Oro _ Gold Base

