

Resa: 8/10 m² al litro.
Essiccazione: al tatto 2/3 ore. In profondità 48/72 ore.
Pulizia attrezzi: acqua tiepida.
Lavabilità: dopo circa 20 gg con acqua e sapone.
Teme il gelo: non applicare a temperature inferiori a 5°C.

*Yield: 8/10 m² per liter.
Drying: on touch 2/3 hours. In depth 48/72 hours.
Cleaning of the tools: lukewarm water.
Washability: after 20 days with water and soap.
It fears frost: don't apply by temperatures below 5°C.*



Designed and made in Italy
by

Colorificio Adriatico srl Industria Italiana Colori
Company with quality system certified
by DNV GL =ISO 9001=
Italia _ 61030 Lucrezia PU
+39.0721.897100
www.colorificioadriatico.it

www.decorativikebana.it

Adriatico

Possono esserci lievi differenze tra i colori di questo catalogo e quelli di produzione.
Controllare sempre il colore con la luce diurna indiretta o lampade opportunamente tarate.
There maybe slight differences between the sample color cards and the actual color
produced. Always check colors in indirect daylight or with lights suitably adjusted.

—
colore
antico
—
kebana
decor
il passato
ritrovato

Linea Kebana

Decor

Finitura policromatica ad effetto antichizzante
*Polychromatic finishing
with old fashioned style effect*

Adriatico

Finitura policromatica ad effetto antichizzante
*Polychromatic finishing
with old fashioned style effect*



Decor

colore
antico

kebana
decor
il passato
ritrovato

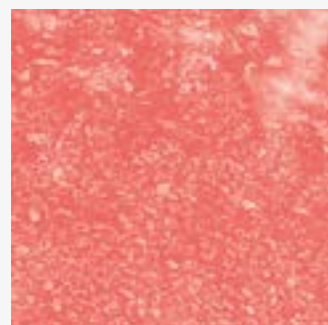
Originale pittura decorativa lavabile, traspirante, anti-muffa, esente da sostanze organiche volatili per finiture policromatiche ad effetto antichizzante di interni pregiati per valorizzare e rispettare l'ambiente e l'uomo.

Original washable, transpiring, anti-mould decorative paint, free from volatile organic substances for polychrome finishing with antiquing effect for interior, it is friendly to both humans and the environment.

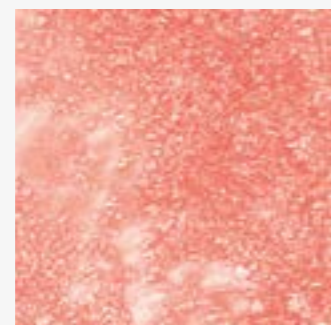
Si applica su qualsiasi tipo di supporto (muro, legno, ferro, cartongesso, ecc.) preventivamente trattati con idoneo ciclo di fondo. Applicare 1 mano di Kebana Decoprimer. Stendere con apposito pennello a spatola, con la tecnica della mano incrociata, avendo cura di non coprire una superficie superiore ai 2 m² alla volta. Trascorsi circa 5/10 minuti, lisciare delicatamente il prodotto con la spatola flessibile per creare la decorazione desiderata. Continuare ad applicare il prodotto fino ad ultimazione del lavoro, con la stessa tecnica.

It can be applied on any kind of support (wall, wood, iron, plasterboard, etc.). Apply 1 coat of Kebana Decoprimer. Spread with the right brush or spatula, using the technique of the crossed hand, having care to not cover each time a surface bigger than 2 square meters. After about 5/10 minutes gently smooth the product with a flexible spatula to create the desired decoration. Continue to apply the product up to completion of the job, using the same technique.

Adriatico



KD 101



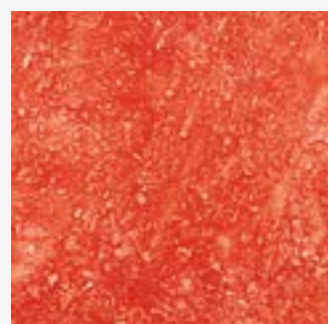
KD 101/1



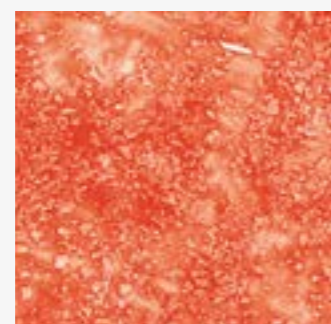
KD 101/2



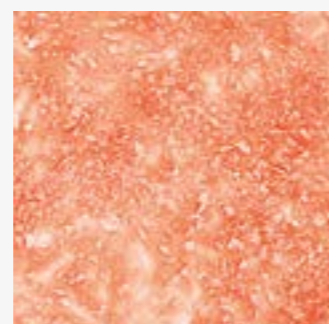
KD 101/4



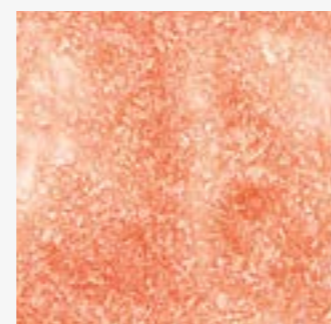
KD 102



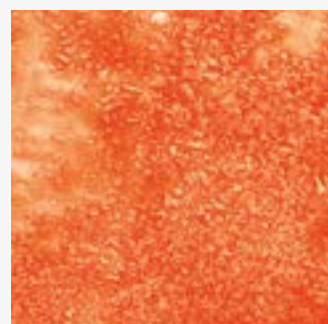
KD 102/1



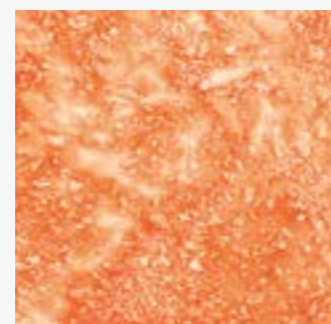
KD 102/2



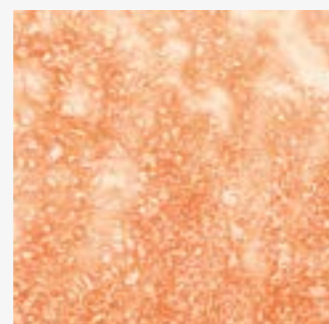
KD 102/4



KD 103



KD 103/1



KD 103/2



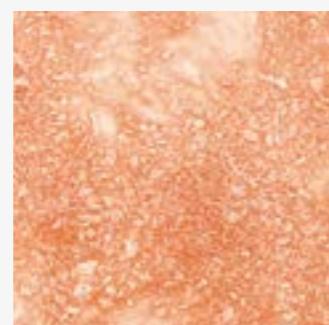
KD 103/4



KD 104



KD 104/1



KD 104/2



KD 104/4



KD 105



KD 105/1

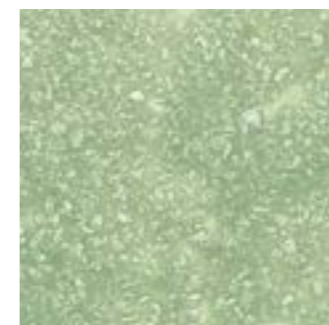


KD 105/2

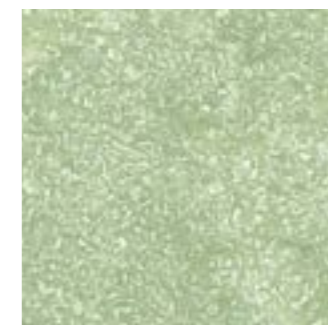


KD 105/4

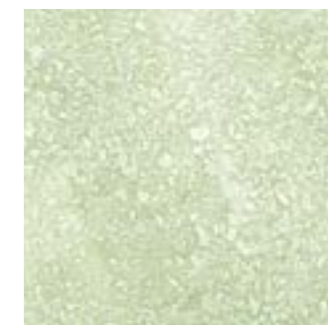
Linea Kebana Decor



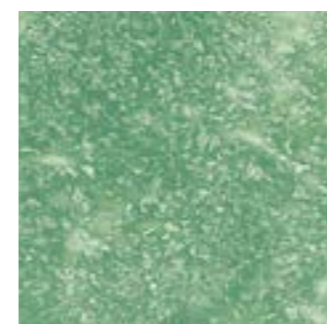
KD 106



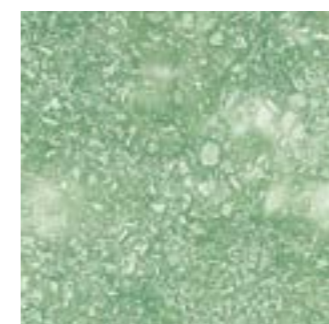
KD 106/1



KD 106/2



KD 107



KD 107/1



KD 107/2



KD 107/4



KD 108



KD 108/1



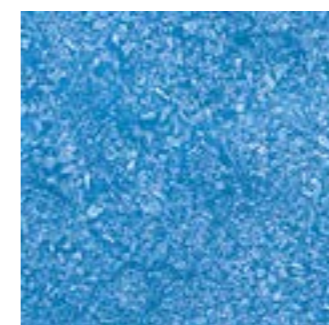
KD 108/2



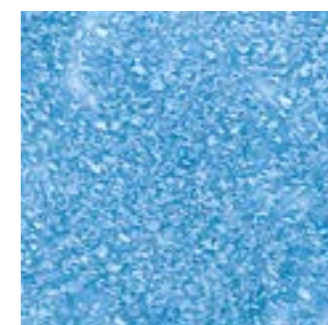
KD 108/4



KD 109



KD 109/1



KD 109/2



KD 110

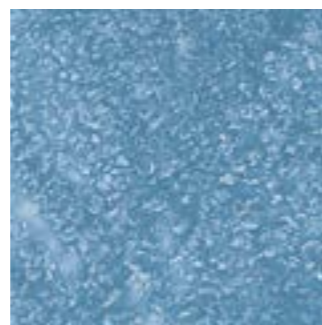


KD 110/1



KD 110/2

—
colore
antico



KD 111



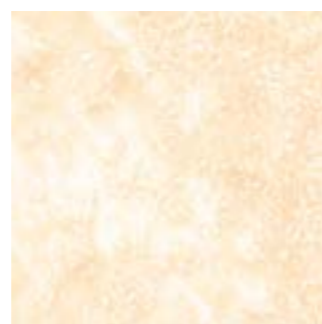
KD 111/1



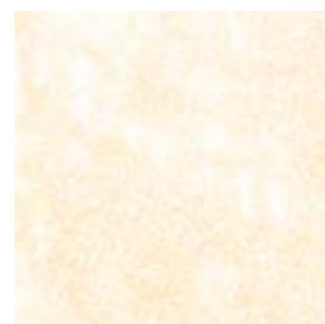
KD 112



KD 112/1



KD 112/2



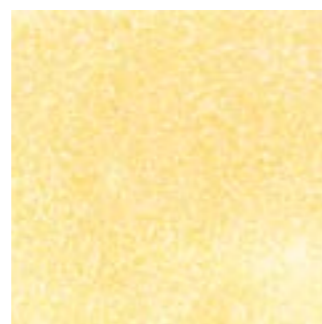
KD 112/4



KD 113



KD 113/1



KD 113/2

—
kebana decor
il passato
ritrovato

Decor



KD 115



KD 115/1



KD 115/2



KD 115/4



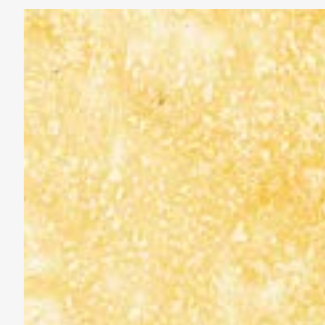
KD 116



KD 116/1



KD 116/2



KD 116/4



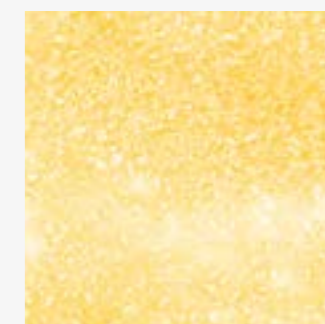
KD 117



KD 117/1



KD 117/2



KD 117/4



KD 118



KD 118/1



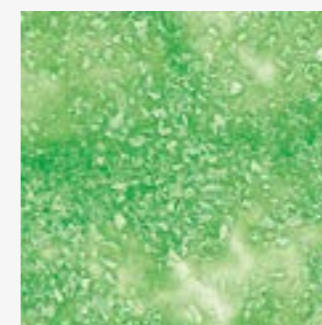
KD 118/2



KD 118/4



KD 119



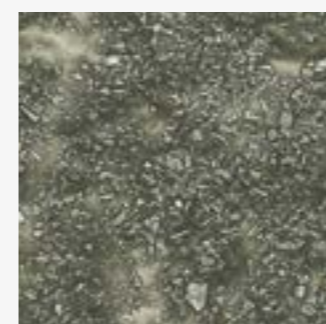
KD 119/1



KD 119/2



KD 119/4



KD 120



KD 120/1



KD 120/2



KD 120/4